

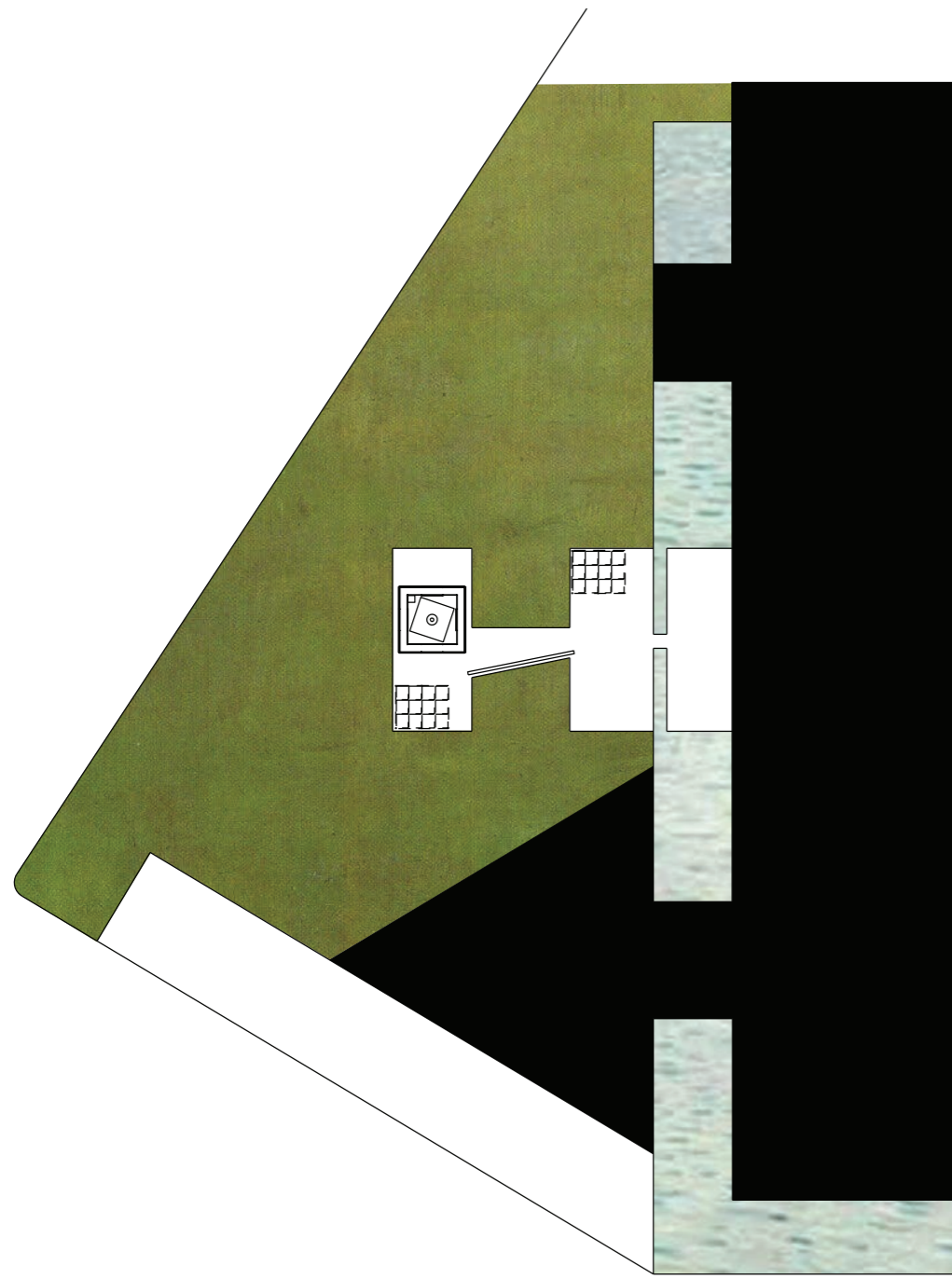


**An Unreachable Core**  
A 9 x 9 x 9 metre illuminated translucent outer cube, constructed from rosette and wedge scaffolding and clad in polycarbonate, is sited parallel to the NGV

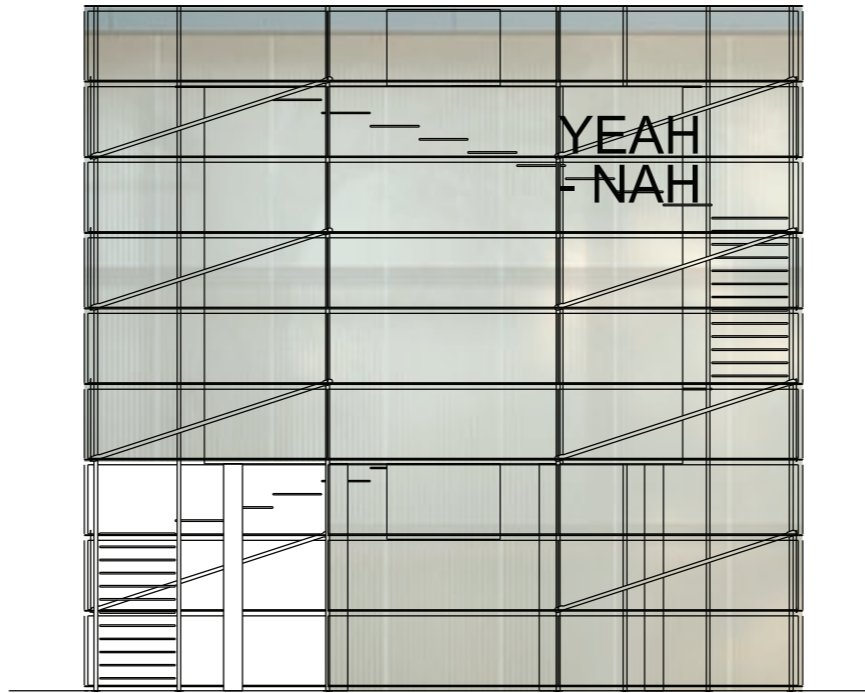
A 5 x 5 x 5 metre inner cube sits within, rotated to align with north-south. This cube is penetrated by two cone shaped openings, mirrored internally, to provide a view of the sky when seen from below and the ground when seen from above

A stair winds up in the interstitial space between the two cubes to allow access to the roof of the inner core. The height of the external cladding and the roof balustrade matches the height of the rooftop viewing cone to reinforce the horizontality, making the roof an island above the surrounding gardens

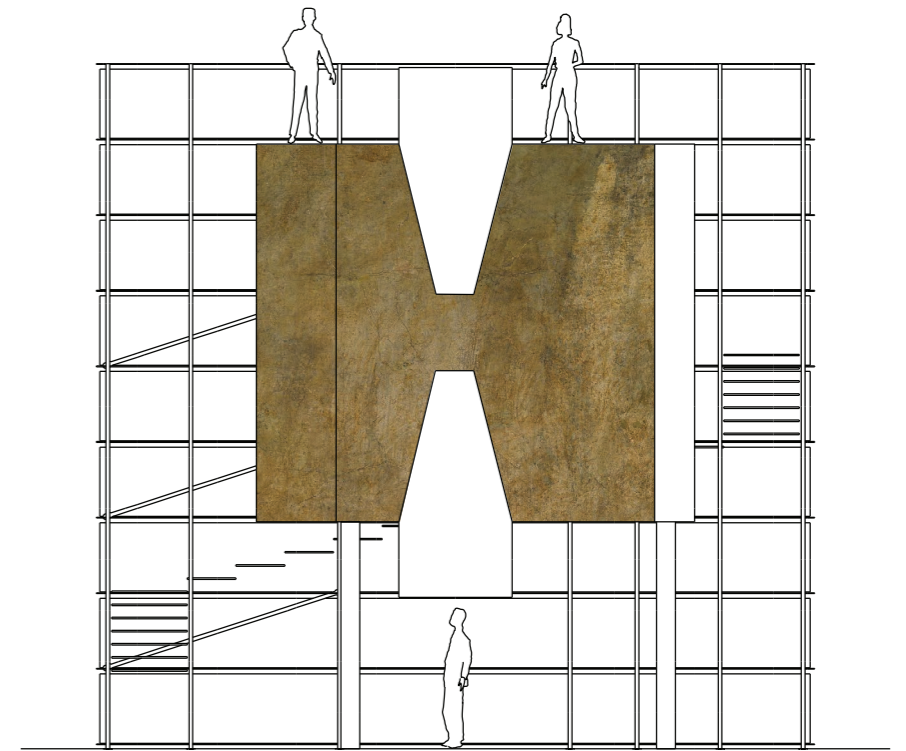
**NGV 064**



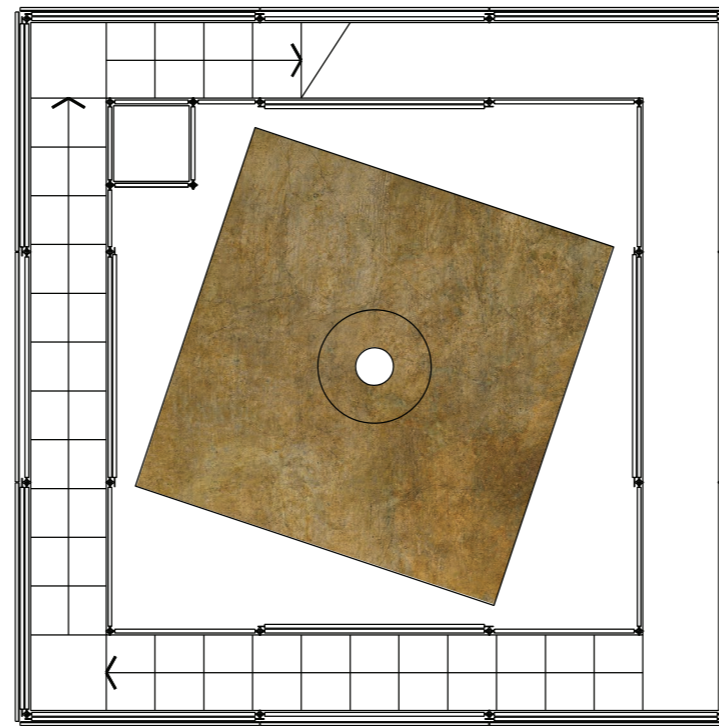
Site Plan 1:1000



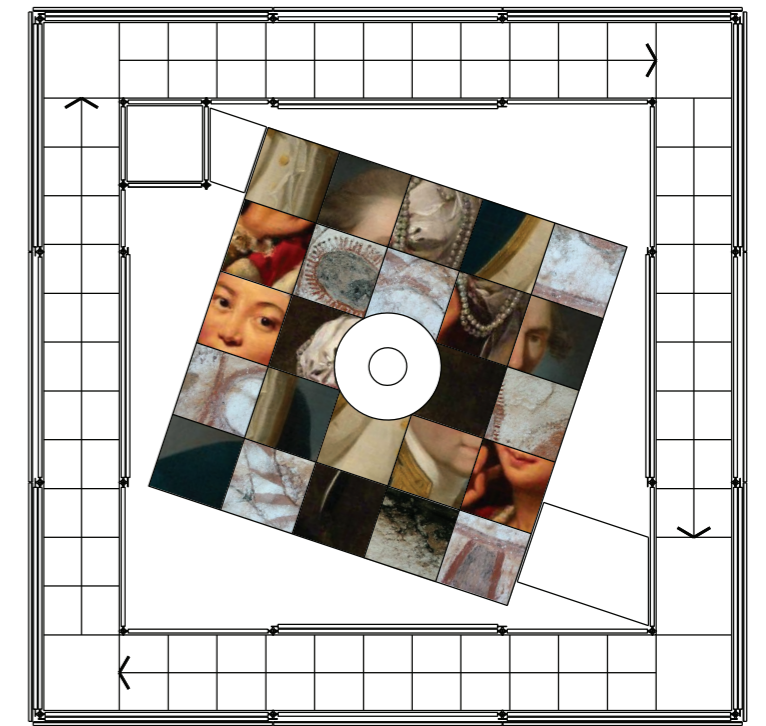
Front Elevation 1:100



Section 1:100



Plan 1:100



Roof Plan 1:100

